

INSTALLATION INSTRUCTIONS

PART# EWNPD16

PNC SIDE BAR FOR NISSAN NAVARA 16-22

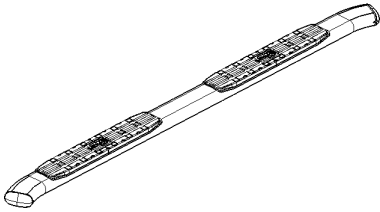
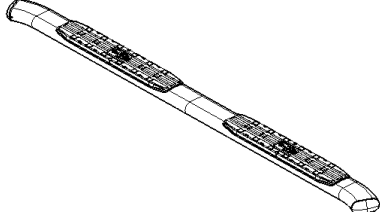
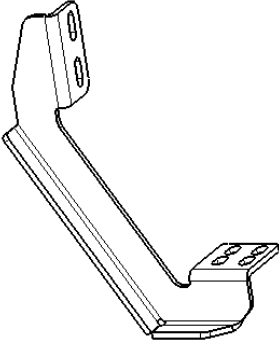
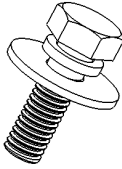

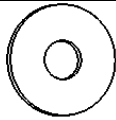
Before Installation

- Please read the instruction completely for easy installation, which will also help you to avoid scratches or other potential damages to your appealing car.
- The figures here are for reference only and may have differences with the actual product you received, however they share the same assembly way.

Care and Cleaning

- Mild soap may be used also to clean the Product.
- Please periodically check and retighten all the hardware and clean the investment for a refresh look.

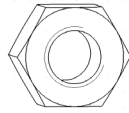
Parts list

NO.	QTY	PIC	NO.	QTY	PIC
①	1	 Side bar(L)	②	1	 Side bar(R)
③	6	 Mounting bracket	④	12	 Hex head bolt, spring washer and large washer assembly M8_25
⑤	12	 Spring Washer D8	⑥	12	 Large Washer D8

INSTALLATION INSTRUCTIONS

⑦

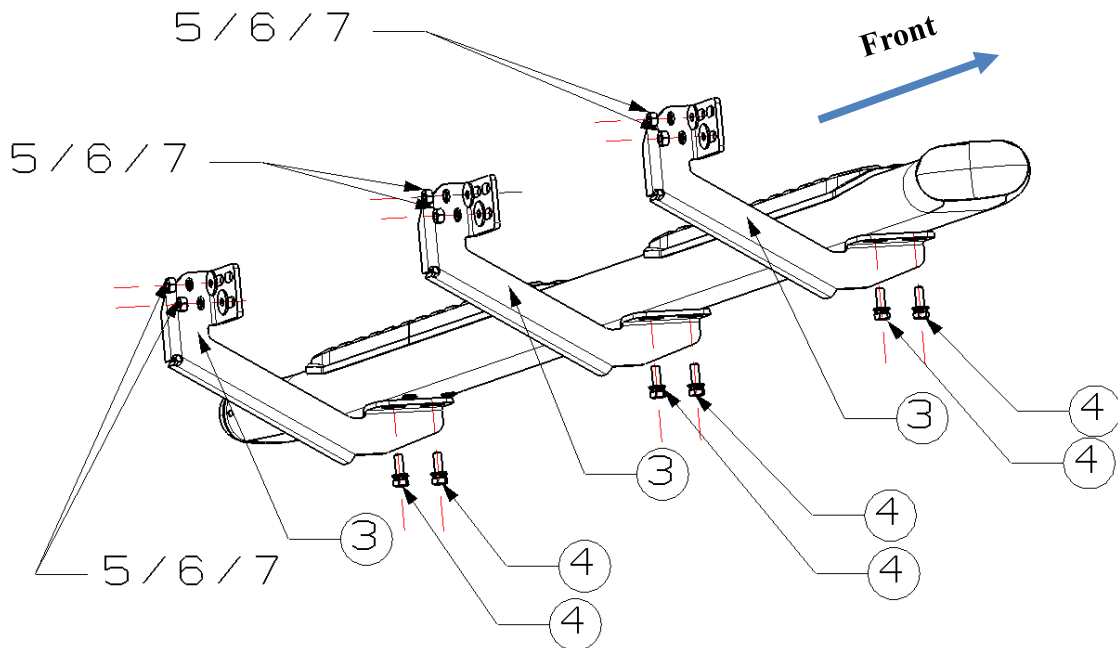
12



Hex nut M8

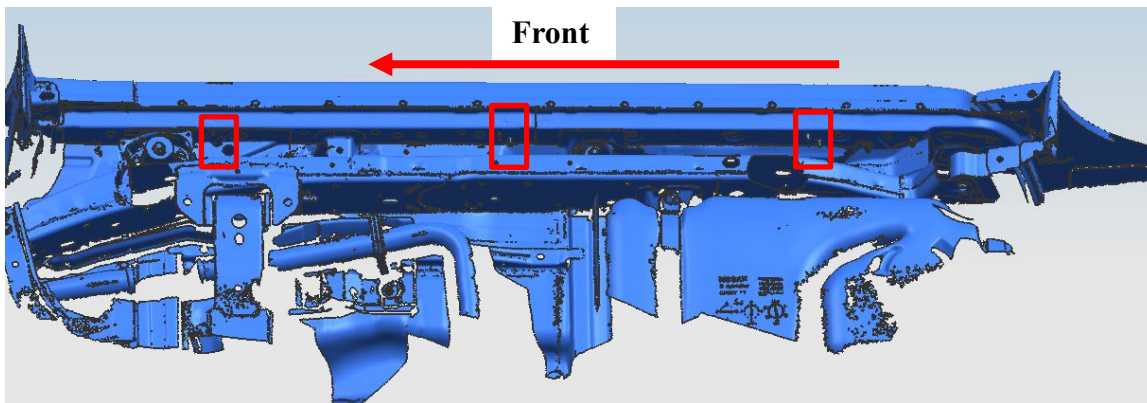
Installation Steps

Installing picture



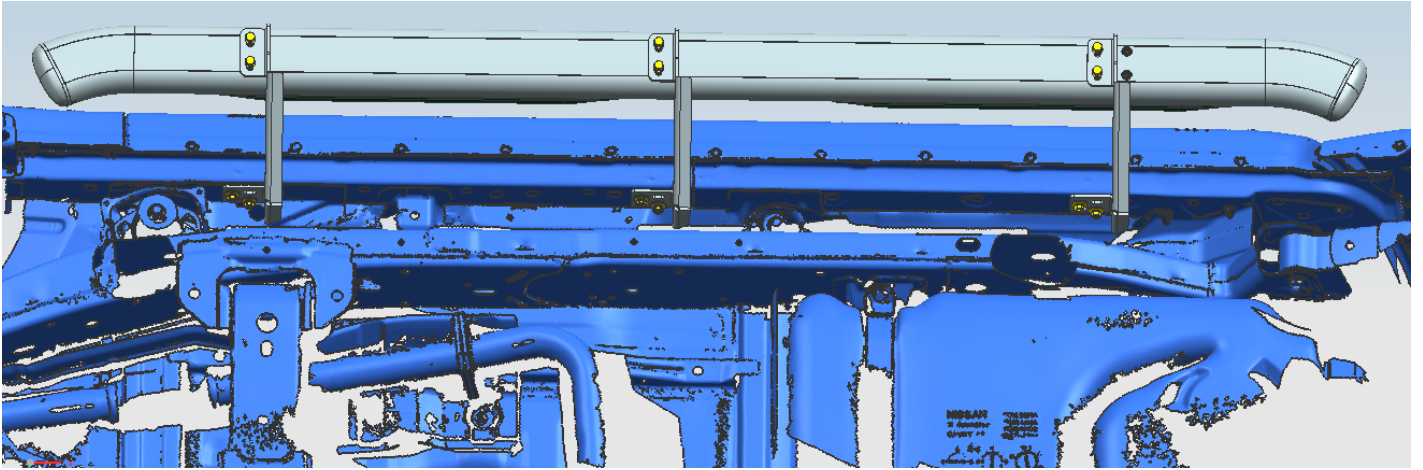
Step 1: Verify that all parts are present according to the manual.

Step 2: Find the exposed 3 sets of mounting points with screws on the inner side of the original car edge.



Install the bracket on the original car in turn, and then adjust the side step to a suitable position to install with the bracket, and the left and right are consistent.

INSTALLATION INSTRUCTIONS



Step 3: Test and make sure that the grille guard is steadily fixed, fully tighten all hardware.

Step 4: Installation is finished, pick up all tools.

NOTE

Any damages and losses caused by improper installation and application, goes beyond our quality warranty.