

INSTALLATION INSTRUCTIONS

PART# CWSXJI19

AL. FA ROOF RACK FOR ISUZU JIMNY 2019 (MODULAR TYPE)

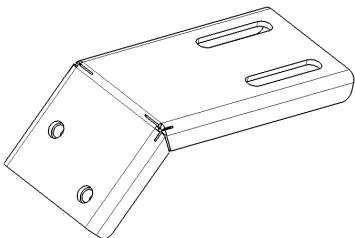
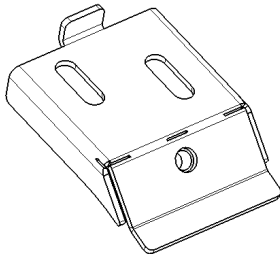
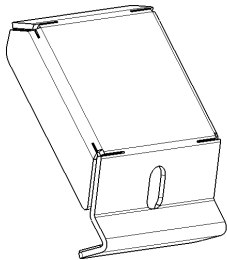
Before Installation

- Please read the instruction completely for easy installation, which will also help you to avoid scratches or other potential damages to your appealing car.
- The figures here are for reference only and may have differences with the actual product you received, however they share the same assembly way.

Care and Cleaning

- Mild soap may be used also to clean the Product.
- Please periodically check and retighten all the hardware and clean the investment for a refresh look.

Parts list

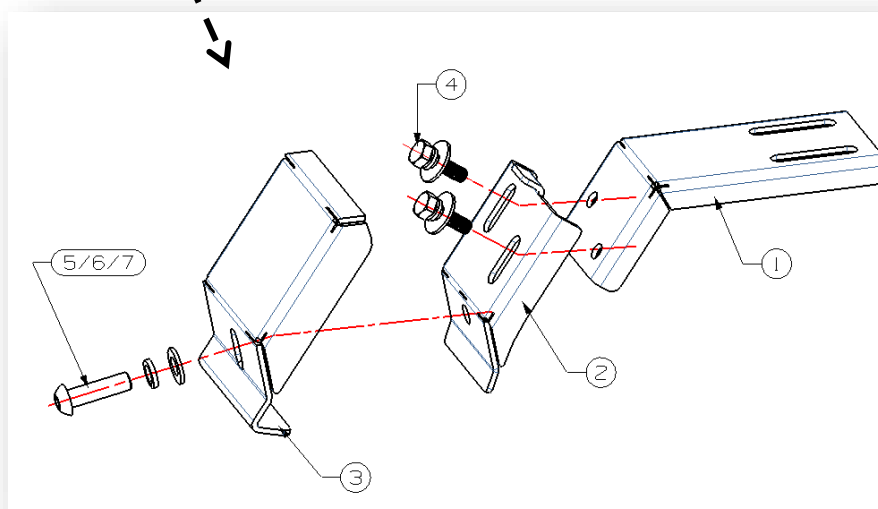
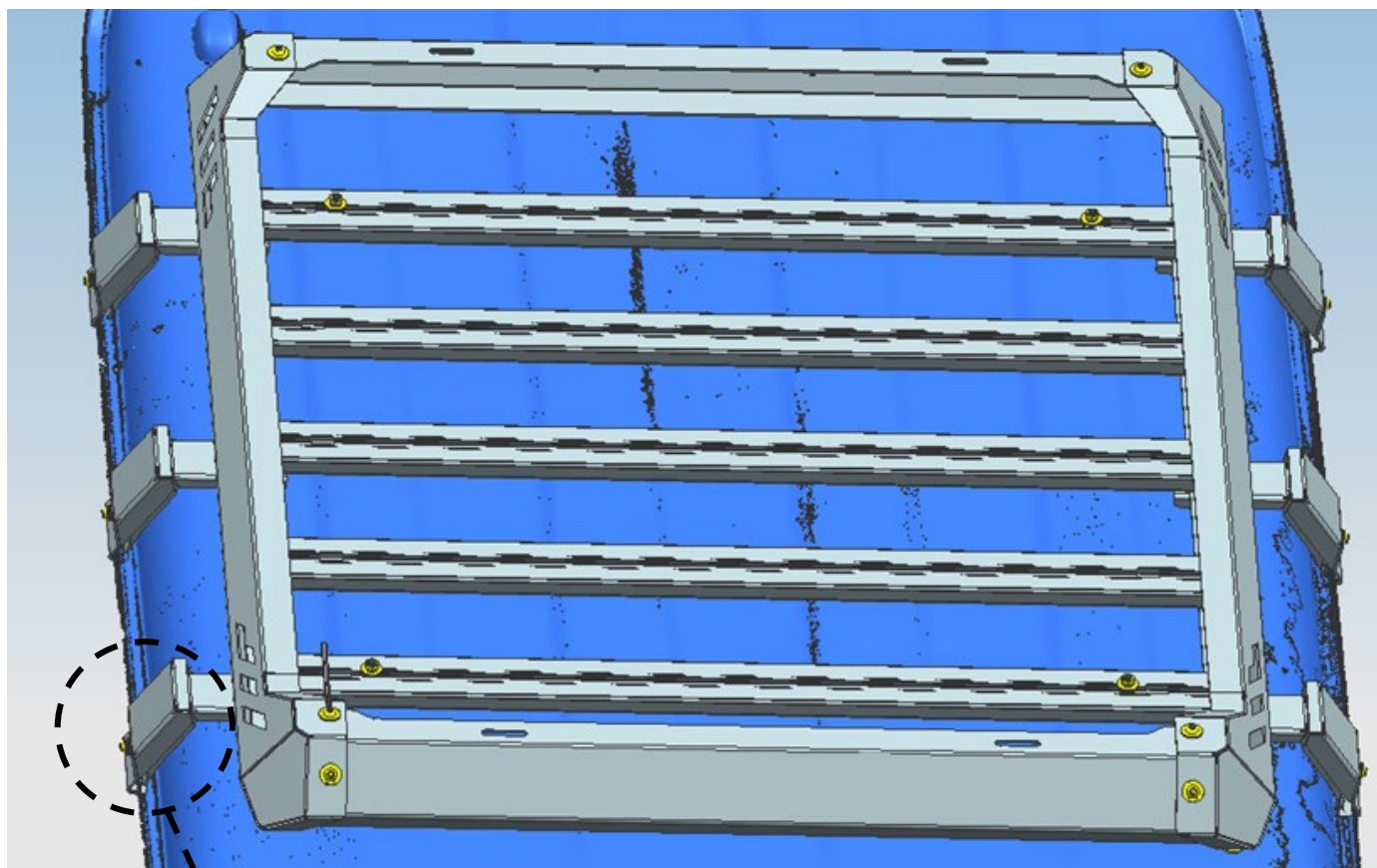
NO.	QTY	PICTURE	NO.	QTY	PICTURE
①	6	 Bracket 1	②	6	 Bracket 2
③	6	 Bracket 3			

Standard Parts List:

INSTALLATION INSTRUCTIONS

NO.	NAME	QTY	NO.	NAME	QTY
④	Hex bolt & spring washer & flat washer assembly M8_25	12	⑦	Flat washer D10(10x20x2mm)	6
⑤	Hex button head bolt M10_35	6	⑧	Allen wrench S=6	1
⑥	Spring washer D10	6			

INSTALLATION PICTURE:

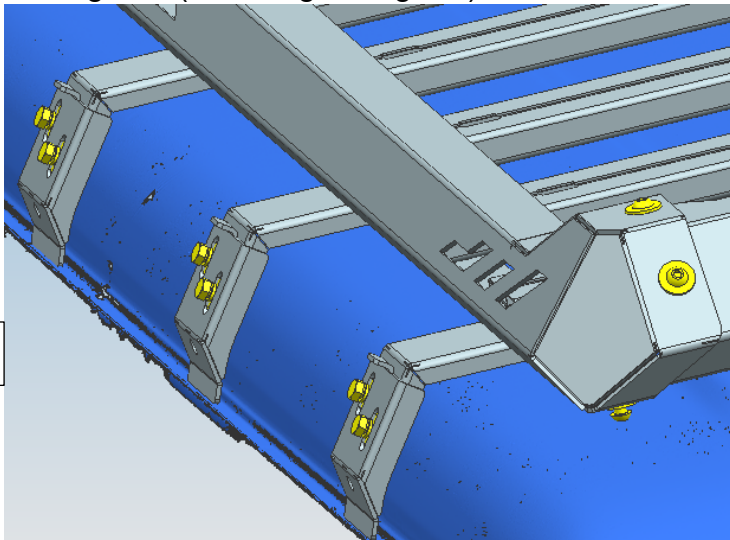
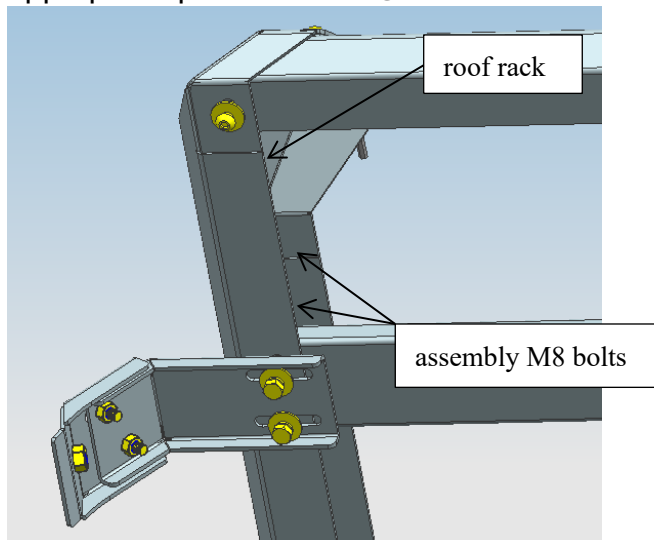


INSTALLATION INSTRUCTIONS

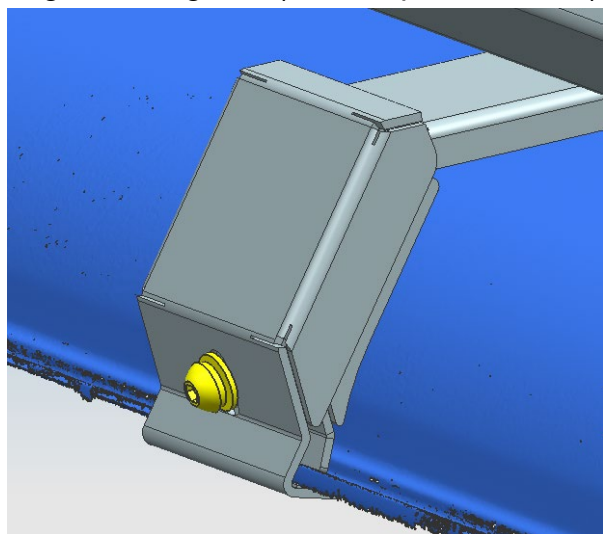
Installation Figure:

Step 1: Verify that all parts are present according to the manual.

Step 2: Assemble ①bracket 1 and ②bracket 2 according to the INSTALLATION PICTURE, and then install them on the roof rack with ④assembly M8 bolts (below left diagram). Adjust to the appropriate position until ②bracket 2 locked in rain gutter (below right diagram).



Step 3: According to the INSTALLATION PICTURE, assemble the ③bracket 3 to cover the outside edge of rain gutter (see the picture below).



Step4: Installation is finished, pick up all tools.

NOTE

Any damages and losses caused by improper installation and application, goes beyond our quality warranty.