

INSTALLATION INSTRUCTIONS

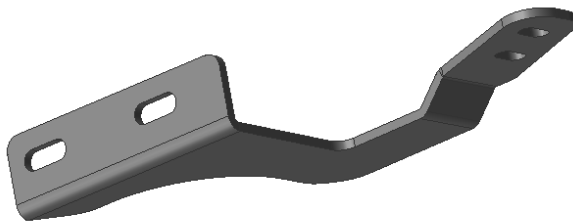
GRILLE GUARD FOR NISSAN NAVARA/FRONTIER 2014+

PART # BWNXNA16

PARTS LIST:

1	Grille Guard	2	Hex Lock Nut M10
1	Driver/Left Mounting Bracket	2	Hex Nut M8
1	Passenger/Right Mounting Bracket	4	Hex Nut M10
1	Driver/Left Top Bracket	4	Hex Bolt (All thread) M10_35
1	Passenger/Right Top Bracket	4	8mm Nylock Nuts
1	U-Bolt		
4	Standard Spring Washer D10		
2	Large Washer D8(8x24x2mm)		
10	Large Washer D10(10x30x2.5mm)		

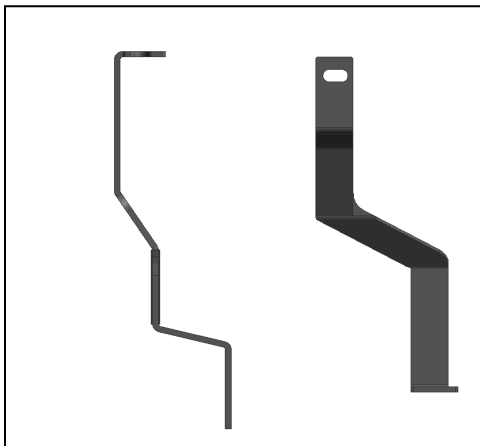
**left Side
Mounting Bracket**



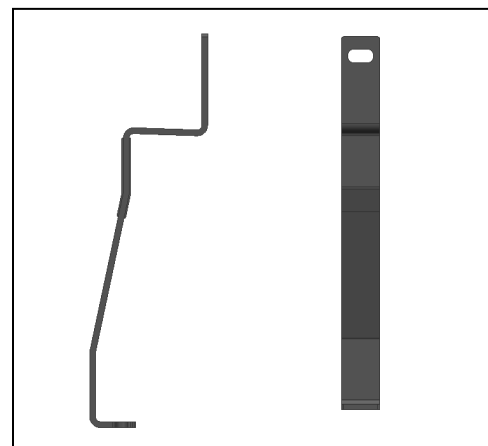
**right Side
Mounting Bracket**



Driver/Left Top Bracket



Passenger/Right Top Bracket



PROCEDURE:

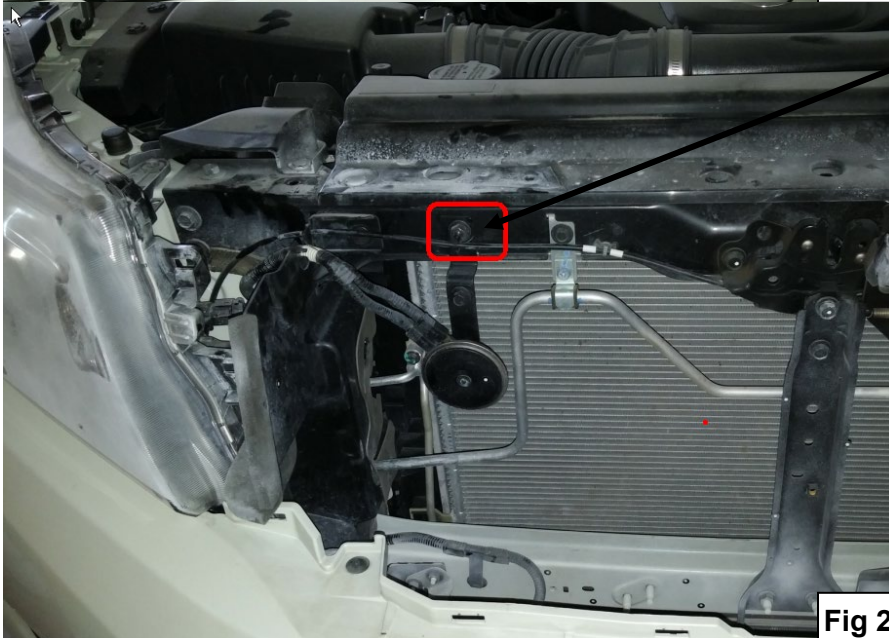
REMOVE CONTENTS FROM BOX. VERIFY ALL PARTS ARE PRESENT. READ INSTRUCTIONS CAREFULLY BEFORE STARTING INSTALLATION.



**Driver/Left Top
Bracket**

Open the engine cover, install left top bracket with the mounting hole as shown in Fig.1 with original hardware.

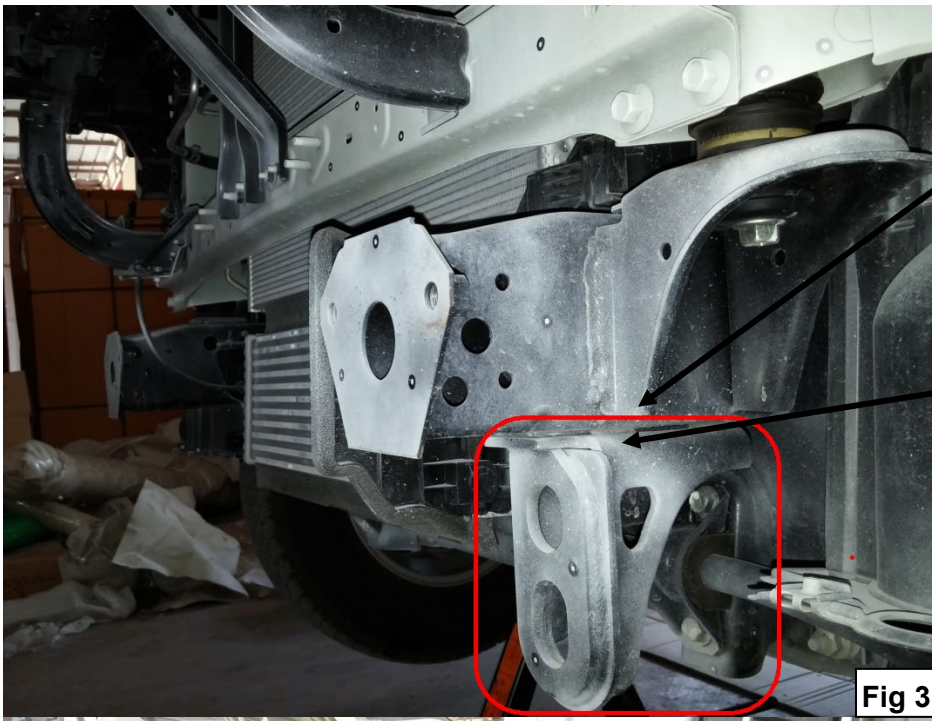
Fig 1



**Passenger/Right Top
Bracket**

Open the engine cover, install right top bracket with the mounting hole as shown in Fig.2 with original hardware.

Fig 2



**left Side
Mounting Bracket**

Remove the original towing hook and keep the hardware to install left mounting bracket.

Fig 3



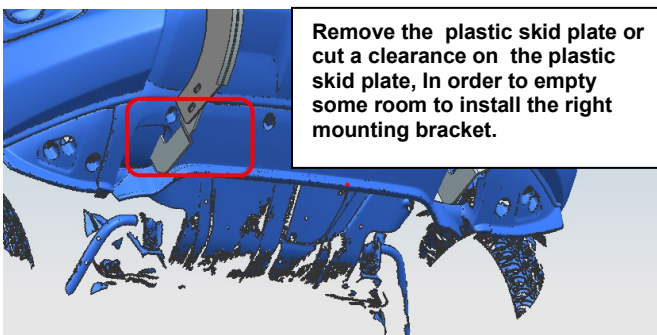
Right mounting Bracket

Remove the plastic skid plate or cut a clearance on the plastic skid plate, in order to empty some room to install the right mounting bracket.

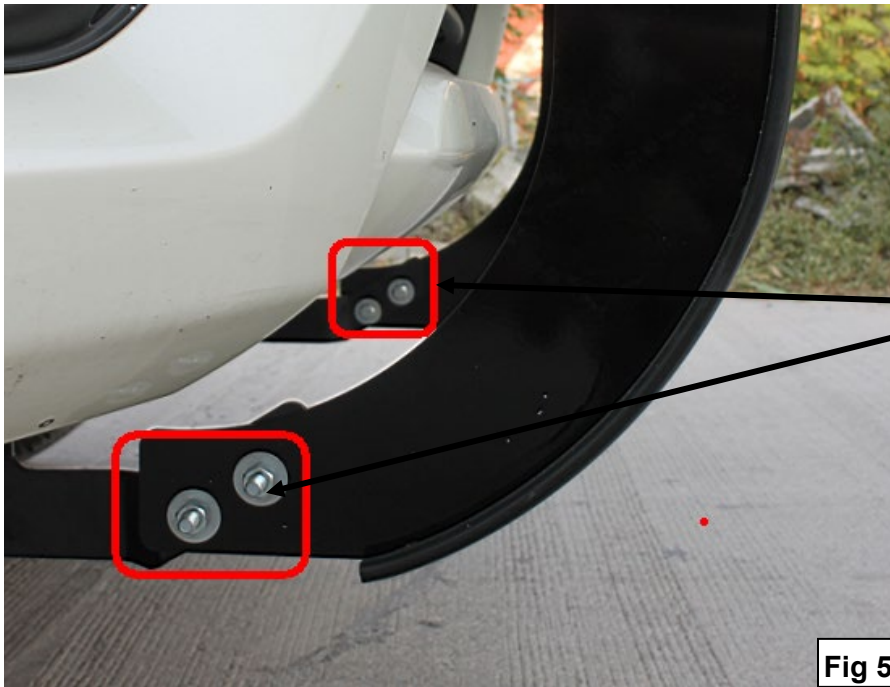
Connect the U-bolt through the holes at the bottom side of the chassis, and then install and fasten the bracket with following M10 bolts and Nuts.

2*Hex Lock Nut M10;
1*U-bolt
2*Large Washer D10(10x30x2.5mm)

Fig 4



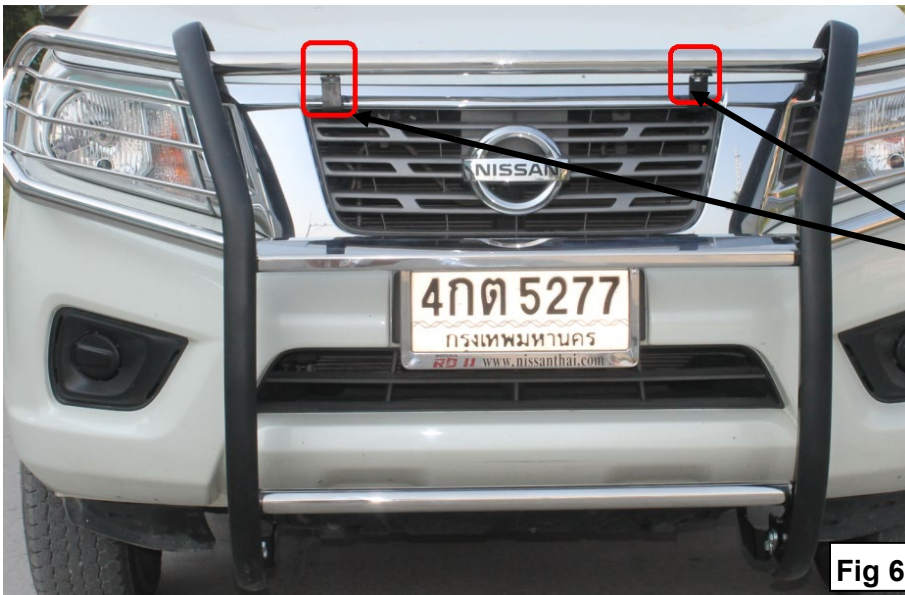
Remove the plastic skid plate or cut a clearance on the plastic skid plate, in order to empty some room to install the right mounting bracket.



4*Hex- Bolt (All thread) M10_35
8*Large Washer D10(10x30x2.5mm)
4*Hex NutM10
4*standard spring washer D10

Connect the grille guard to the mounting brackets with above hardware.

Fig 5



2*Hex Nut and washer
combo M825

Connect the grille guard to the top brackets with above hardware.

Fig 6

To protect your investment, wax this product after installing. Regular waxing is recommended to add a protective layer over the finish. Do not use any type of polish or wax that may contain abrasives that could damage the finish.

For stainless steel: Aluminum polish may be used to polish small scratches and scuffs on the finish. Mild soap may be used also to clean the Sidebar.

For gloss black finishes: Mild soap may be used to clean the Sidebar.

