

## GRILLE GUARD FOR FORD RANGER 2016

### Before Installation

- Please read the instruction completely for easy installation, which will also help you to avoid scratches or other potential damages to your appealing car.
- The figures here are for reference only and may have differences with the actual product you received, however they share the same assembly way.

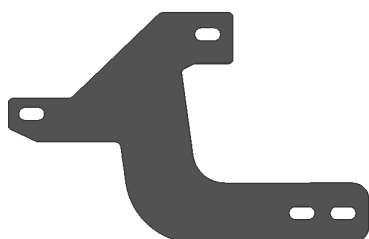
### Care and Cleaning

- Mild soap may be used also to clean the Product.
- Please periodically check and retighten all the hardware and clean the investment for a refresh look.

### Parts list

QTY	NAME	QTY	NAME
1	Grille Guard	15	Large Washer D10(10x30x2.5mm)
1	Driver/Left Mounting Bracket	8	Standard Spring Washer D10
1	Passenger/Right Mounting Bracket	2	Hex Nut M8
1	Driver/Left Top Bracket	2	Standard Spring Washer D8
1	Passenger/Right Top Bracket	4	Flat washer D8(8x16x1.6mm)
1	T-Bolt	2	Hex bolt (full thread) M8_25 (View)
8	Hex Nut M10		
2	Hex bolt (full thread) M10_90		
5	Hex bolt (full thread) M10_35		

left Side Mounting Bracket

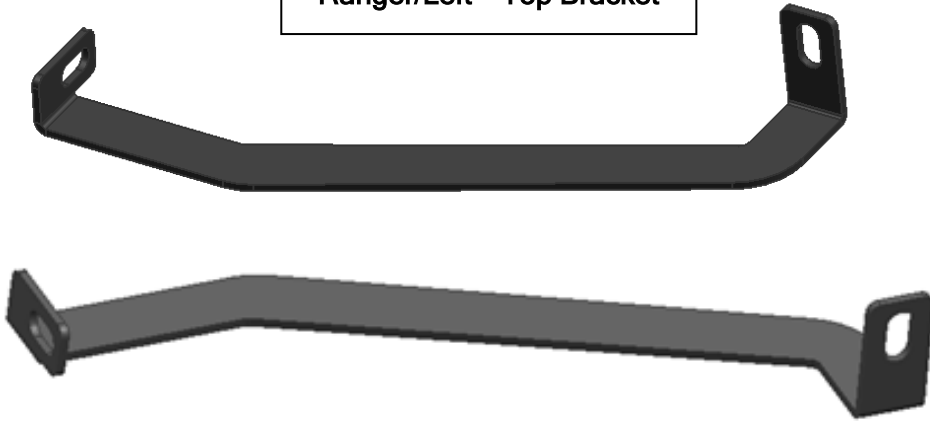


right Side Mounting Bracket



# INSTALLATION INSTRUCTIONS

Ranger/Left Top Bracket



## Installation Steps

REMOVE CONTENTS FROM BOX. VERIFY ALL PARTS ARE PRESENT. READ INSTRUCTIONS CAREFULLY BEFORE STARTING INSTALLATION.



Fig 1

1\*Right side mounting Bracket  
1\*M10-T-Bolt  
1\*Flat washer D10(10x30x2.5mm)  
1\*Standard Spring Washer D10

1\* Hex bolt (full thread) M10\_90  
2\*Flat Washer D10(10x30x2.5mm)  
1\*Standard Spring Washer D10

Align the holes on the Right mounting bracket to the mounting holes on chassis as shown in Fig.1, and tighten with above hardware.

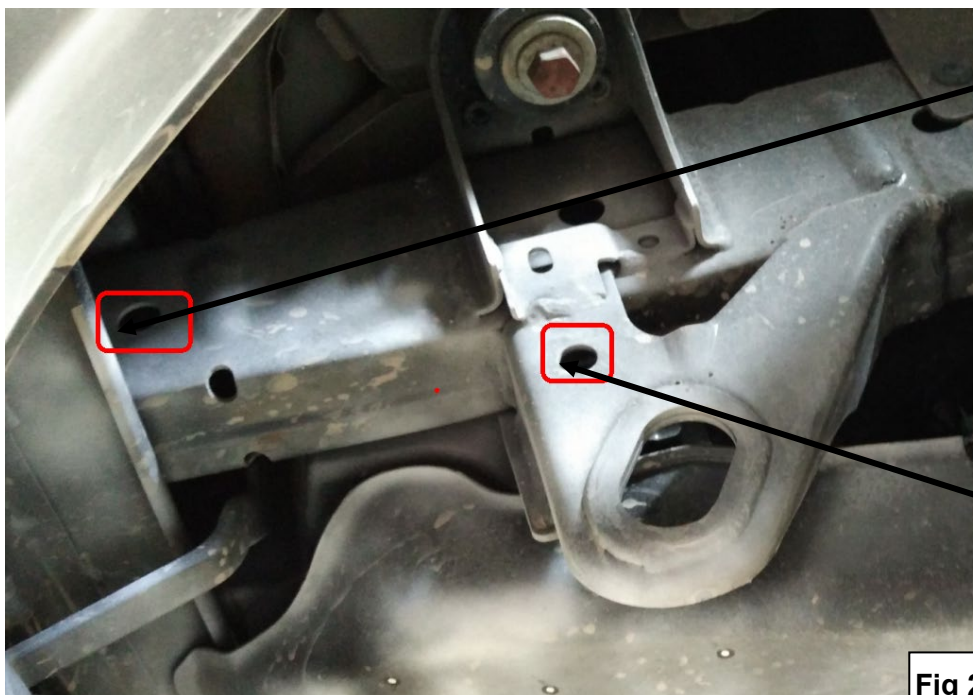


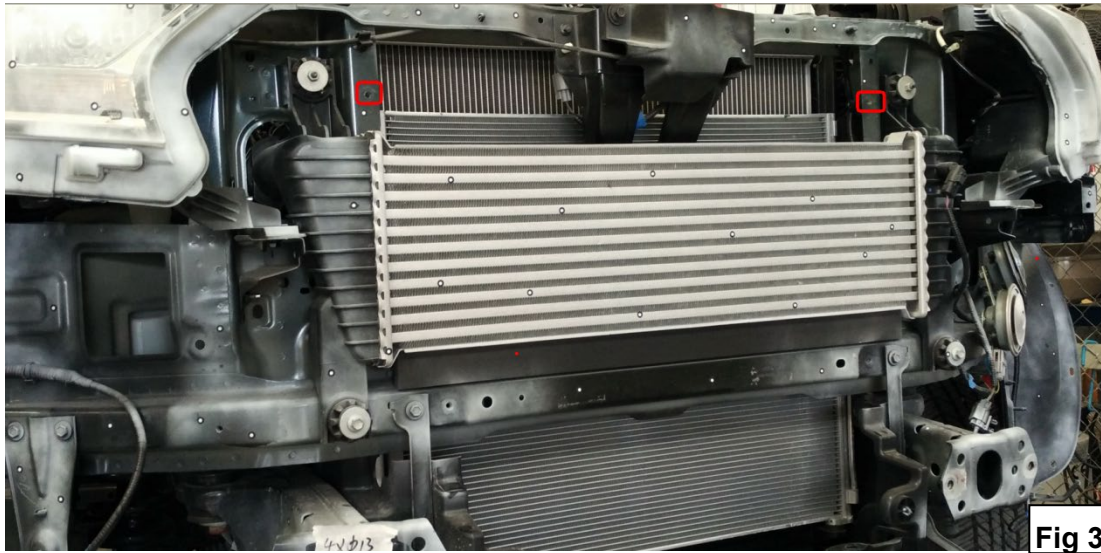
Fig 2

1\* Hex bolt (full thread) M10\_90  
2\*Large Washer D10(10x30x2.5mm)  
1\*Standard Spring Washer D10

Align the holes on the Left mounting bracket to the mounting holes on chassis as shown in Fig.2, and tighten with above hardware.

1\* Hex bolt (full thread) M10\_35  
2\*Washer D10(10x30x2.5mm)  
1\*Standard Spring Washer D10

## INSTALLATION INSTRUCTIONS



Mounting Hole for Right top bracket

Install the top bracket with the mounting hole and original Nuts as shown in Fig.3. Left and Right top bracket share the same installation way.



Fig4

Installation Complete



## INSTALLATION INSTRUCTIONS



4\* Hex bolt (full thread) M10\_35  
8\*Large Washer D10(10x30x2.5mm)  
4\*Hex Nut M10

Connect the grille guard to the mounting brackets with above hardware.



2\* Hex Nut M8  
2\* Hex bolt (full thread) M8\_25  
4\*Flat WasherD8(8x16x1.6mm)

Connect the grille guard to the top brackets with above hardware.

**To protect your investment**, wax this product after installing. Regular waxing is recommended to add a protective layer over the finish. Do not use any type of polish or wax that may contain abrasives that could damage the finish.

**For stainless steel:** Aluminum polish may be used to polish small scratches and scuffs on the finish. Mild soap may be used also to clean the Sidebar.

**For gloss black finishes:** Mild soap may be used to clean the Sidebar.

### NOTE

Any damages and losses caused by improper installation and application, goes beyond our quality warranty.